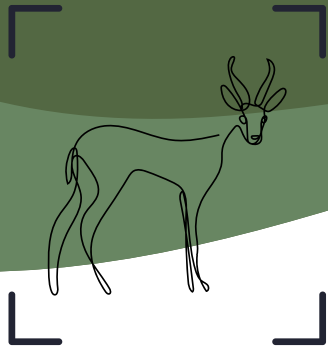


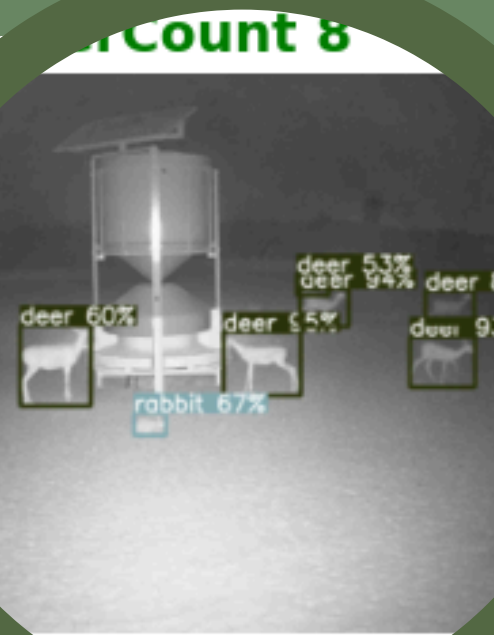
# DUB DEV



## DHEBA

REVOLUTIONIZING ANIMAL FEEDING & RECOGNITION  
WITH NEXT-GEN AI

Join us in promoting a  
balanced coexistence with  
wildlife. Discover the future of  
animal feeding with DHEBA—  
where advanced technology  
and sustainability unite.



Visit our website

**DUB DEV TECHNOLOGIES**





# First of its kind

DUB DEV proudly introduces **DHEBA**—a revolutionary solution that integrates AI, solar power, and remote control to provide a seamless and sustainable feeding experience for wildlife. By merging advanced technology with environmental stewardship, DHEBA supports a harmonious coexistence between humans and nature.

## AI Animal Detection

### Precision in Every Detail

- **Advanced AI Technology:** Count and identify a diverse range of animal species visiting your feeder.
- **Comprehensive Insights:** Gather valuable data on local wildlife populations across Dubai and the Arabian Peninsula.
- **Detailed Reports:** Access animal species identification reports to enhance your understanding of local fauna.

## Autonomous Feed Dispersal

### Feeding with Minimal Footprint

- **Effortless Operation:** Dispense feed without physical presence, reducing manual intervention.
- **Weight-triggered Feeder:** Designed to dispense a set amount of feed when the weight on the feeding tray drops below a certain threshold, ensuring that animals always have access to food without overfeeding or wasting resources.
- **Promote Conservation:** Minimize human impact on wildlife sanctuaries and support environmental preservation.

## User-Friendly Interface

### Seamless Control at Your Fingertips

- **Global Access:** Manage your feeder from anywhere through our intuitive online portal.
- **Features Include:**
  - Map Views: Visualize feeder locations and wildlife activity.
  - Customizable Feed amount: Set feed amount threshold in (KG).
  - Real-Time Weather: Monitor conditions affecting feeding.
  - Statistical Reports: Analyze feed consumption data and feeder performance.
  - Feeder Status: Check operational status and maintenance needs.
  - User Management: Easily manage multiple users and permissions.

## Simple Design

### Nature-Inspired Elegance

- **Wildlife-Friendly Aesthetics:** Design inspired by natural forms, blending seamlessly into the environment.
- **Color Selection:** Chosen to blend with surrounding area.
- **Durable Construction:** High-grade metals ensure longevity and resistance to harsh environmental conditions.

## Sustainable Energy

### Powering the Future

- **Solar Powered:** Operates independently of conventional energy sources, ensuring functionality anywhere, anytime.
- **Eco-Friendly:** Reduces carbon footprint and promotes green energy use.



Visit our website  
**DUB DEV TECHNOLOGIES**

**DUB DEV**